

Technical Guide



16 & 17 March 2024

Contents

Welcome to the 2024 Mansfield Hotel Tour powered by Orcoda.....	3
From the MMBCC President... ..	3
from our sponsors, the Mansfield Hotel.....	3
And Orcoda... ..	4
and from the Race Director.	4
Event Information.....	5
Emergency Phone Numbers	5
Event Contact List	5
Emergency Medical Facilities.....	6
Number Collection.....	6
Presentations.....	6
Start Lists and Results	6
AusCycling – Specific Regulations.....	7
Mansfield Hotel Tour p/b Orcoda – Specific Event Information	9
General Classification	9
Mountains Classification.....	10
Sprint Classification	10
Time Bonuses.....	11
Teams Classification (A Grade only)	11
Most Competitive	12
Course Information.....	13
Stage 1: Individual Time Trial.....	13
Stage 1 Map	13
Stage 2 – Col Du Tolmielet Circuit	14
Stage 2 Map	17
Stage 3: Mt Buller Hill Climb	18
Stage 3 Map	21
Course Mockas	22
Course Mocka: Stage 1 - ITT	22
Course Mocka: Stage 2 – Col du Tolmielet Circuit.....	23
Course Mocka: Stage 3 - Mt Buller Climb	25

Welcome to the 2024 Mansfield Hotel Tour powered by Orcoda...

From the MMBCC President...

Dear competitors, families, supporters, and officials,

On behalf of the Mansfield Mt Buller Cycling Club and the broader Mansfield community I would like to take this opportunity to welcome teams, riders, and supporters to the 2024 Mansfield Tour.

I am very proud of our tour organizing committee who have worked tirelessly to bring this event to fruition. It is not a small undertaking organizing an event of this size and the entire tour organizing committee should be congratulated for their efforts.

I wish to thank our volunteers and officials for giving up their time to assist the club in the running of this event.

And a huge thankyou to our sponsors, in particular Orcoda and the Mansfield Hotel for their support. Please support our sponsors because without their input this event would not proceed.

Enjoy your weekend of racing. Race hard and race safely. The event has seen some changes from previous editions and will provide challenges for everyone competing.

Our thanks and best wishes for racing success is extended to all competitors who are with us this weekend for the Mansfield Tour.

Dave Empey

President, Mansfield Mt Buller Cycling Club

from our sponsors, the Mansfield Hotel...

The Mansfield Hotel is at the epicentre of Victoria's magnificent High Country region. Built in 1862, the grand old building holds a significant place in the town's heart as a beloved watering hole and gathering place.

As a proud cycle-friendly destination, the Mansfield is the perfect meeting spot for adventure groups, providing a family-friendly space specialising in feel-good country comforts, the best in seasonal produce and a fantastic array of local beers and wine and to quench your thirst after a day exploring.

The Mansfield Hotel is a proud sponsor of the Tour of Mansfield, celebrating the beautiful High Country region as a cycling destination.

Lesa and Steve Brown

Mansfield Hotel

And Orcoda...

ORCODA Limited (ASX: ODA) is proud to be a sponsor of the Mansfield Hotel Tour 2024. We are a smart transport technology provider that uses our technology to run the snow season transportation throughout Mt Buller Resort.

Our other solutions include an immobilisation anti-theft tech to help protect your car - Orcoda Connect. Combining innovative app technology with a vehicle immobilisation device, we can provide an enhanced layer of protection against car theft. Orcoda Connect is also used for pool car booking management.

We enjoy showing our support for the local communities we operate in, through sponsorship as well as volunteering on the day to assist the race organisers. We're also here to test new transport developments and prepare for the coming snow season.

Thank you for joining in today's event and we look forward to meeting you all at the award presentations.

Regards,

Simon Anthonisz (GM Healthcare and Transport)

and from the Race Director.

Welcome to the 2024 Mansfield Hotel Tour! On behalf of myself and the race committee including Bruce Halket, Alex Green, Dave Jagger, Mel Green, Cameron Dobson, John Eisner and Ian Conrick, we hope you enjoy your weekend in Mansfield.

Organising the race this year has been particularly challenging. Various entities continue to make it more difficult with every passing year. Despite these challenges MMBCC has risen to the challenge and we are pleased to be able to deliver the ninth edition of the race.

It would not be possible without the incredible support from the sponsors including Orcoda, The Mansfield Hotel, Lezyne, Paton Air Helicopters, Mansfield Crushing, and All Terrian Cycles.

We are incredibly excited about the new stage two Col du Tolmielet circuit that climbs the hard way up to Tolmie. MMBCC member Simon Gerrans utilized this climb as a key ingredient in his summer training to prepare for his successful National Championships and Tour Down Under campaigns. Thirty minutes is a good benchmark time for amateur riders to ascend the climb. Simon at his peak would do ten consecutive hill repeats and each time the climb took him less than twenty minutes bottom to top. Competitors are rewarded for their ascending efforts with a fantastic descent down the "twisties" on the Whitfield Road. MMBCC members consider these roads the best in our region, so we hope you enjoy them as much as we do.

MMBCC is a small club, so it is literally all hands on deck to staff the event. Please show your appreciation to the MMBCC members you see doing all the jobs on corners, in official vehicles, setting up and packing down.

Have a great weekend! Race hard but more importantly race safe.

Jarrold Appleton

Event Information

1. This is a three stage, two-day tour based on time for the General Classification.
2. The Mansfield Tour is promoted by the Mansfield Mt Buller Cycling Club and is sanctioned by AusCycling.
3. The Mansfield Hotel Tour powered by Orcoda is part of the 2024 AusCycling Victorian Road Series (VRS) and is subject to the 2024 AusCycling VRS Regulations.
4. The AusCycling, Constitution, By-Laws, Technical Regulations as well as specific 'Event Specific Regulations' listed hereunder are applicable to all competitors & accredited persons. Violations will be referred to the Commissaire Panel & Race Organisation for recommendation in respect to any penalty.

Emergency Phone Numbers

Ambulance / Police:

Ph: 000

Event First Aid:

John Eisner

Ph: 0428 503 437

Steve Curnow

Ph: 0490 342 590

Event Contact List

Race Director:

Jarrold Appleton

Ph: 0448 043 413

Chief Commissaire:

Matthew Wright

Ph: 0409 139 316

Commissaires:

Carol Armstrong

Doug Armstrong

Laurie Noonan

Naarah Bretton

Tony Copland

Andrew Falconer

Annina Gallagher

Bob Johnston

Doug Reith

Timing & Results: Nathan Fraser

TBA

AusCycling: Annina Gallagher

Ph: 0429 826 396

Emergency Medical Facilities

Mansfield District Hospital – 53 Highett St, Mansfield

Ph: (03) 5775 8800

Number Collection

Number collection for the Mansfield Tour will be from 6pm – 9pm on Friday 15 March, at the Mansfield Hotel, 86 High St, Mansfield. Registration will also be available on Saturday 16 March from 7am, at the Time Trial start.

You may be required to present your AusCycling RACE ALL DISCIPLINE Membership (trial/temporary memberships are not accepted) and proof of identity to receive your race numbers & transponder.

Presentations

Presentations on the Saturday night for stages 1 and 2 will be held at The Mansfield Hotel at 7pm. This will also include a random prize draw with thousands of dollars of prizes being given away from All Terrain Cycles, Lezyne, Goodyear and Krush – so all entrants are encouraged to come along and win!

Presentations on the Sunday for will be held at The Mansfield Hotel at 2pm.

Top three placegetters for each stage, as well as the top three place getters in the Sprint and KOM/QOM competitions and the top placed team after three stages will be presented. If a rider fails to present for presentation the rider will forfeit their prize.

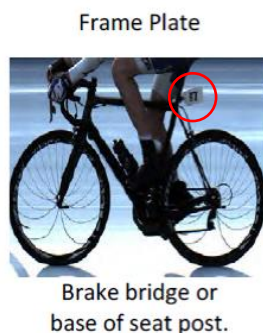
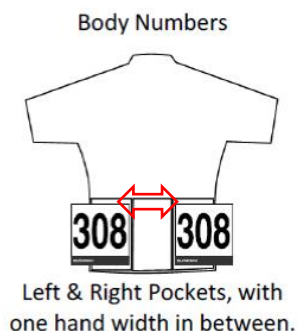
Start Lists and Results

Start lists and results will be available on <https://6-v.org/mt/>

Start times for the stage 1 individual time trial will be available by Friday, 15 March at the latest.

AusCycling – Specific Regulations

1. As this is an AC sanctioned event, AC Technical Regulations and penalties apply. For full details go to [AusCycling | Governance, Rules & Policies](#).
2. As this event (stage 2 and 3) is conducted on open roads, all bicycles must have an **appropriate red light** fitted and operating on either the seat post or right rear seat stay of their bike. The light must be **visible from 200 metres** in daylight to the rear & operational during the **entire duration** of this event.
3. An Australian Standards approved (AS/NZ 2063) helmet shall be worn at all times whilst riding a bicycle on a highway (Local Police as well as AC Officials will issue fines to riders who do not observe this Law)
4. All competitors are reminded that it is an **offence to urinate within view of the public**. The penalty is disqualification from the event, a \$100 fine and their license suspended for 4 weeks (Local Police as well as AC Officials may issue fines to riders who do not observe this Law).
5. Littering is against the regulations of the sport of cycling. Any rider who **drops, throws or discards rubbish** may be disqualified from the event and fined \$100.
6. *Police permits for events conducted on 'Open Roads', require all competitors to keep left at all times.*
7. *It is a clear VICROADS administered law, therefore any competitor detected who purposely **crosses 'Double continuous dividing lines'** will be disqualified from the event, fined \$100 and their license will be suspended for 4 weeks.*
8. Competitors who **cross the nominal centre** of a roadway may be fined \$100 for the first offence, second offence will be disqualification, fined \$200 and report to AusCycling for disciplinary action.
9. **Cameras** attached to a competitor's bicycle are allowed. The camera must be presented on the bike to the Chief Commissaire before the start of the event. The Chief Commissaire must approve the use of the camera **prior** to use.
10. If required, any competitors elected, will submit themselves to anti-doping control conducted by Sports Integrity Australia - SIA, under the guidelines set out by the UCI.
11. During the race riders must wear **two (one for ITT) body numbers and carry a frame number (road race)** fixed to the **rear brake bridge, or base of the seat post**. Body numbers left and right-side pockets with a minimum one hand spacing between each number.
12. Riders must not cut, fold, crumple or modify any numbers in any way.
13. Numbers must be visible at all times.
14. Riders are issued with a **transponder**. Riders must make sure they position the transponder as low as possible on a front fork for all stages. Failure to attach the transponder may result in a delay of the result.



It is the riders' responsibility to return their transponder after they finish/abandon the race. Transponders that are not returned at the event conclusion need to be posted asap to:
AUSCYCLING, 281 DAREBIN RD, THORBURY, 3071, VIC.

Lost transponder fee: \$125

15. As this is a stage race, riders need to start and complete each stage to continue in the race. An exemption may be made at the discretion of the event organiser and President of the Commissaire Panel in case of legitimate mechanical mishaps or crashes (if rider needs medical treatment or bike is unrideable). Riders who are allowed back in the race for the following stage(s) will be given the slowest time plus five minutes and will no longer be eligible for Overall Hill Climb or Sprint Competitions.
16. The use of [time trial specific equipment](#) is generally allowed at all time trial events unless mentioned otherwise long as it complies with [UCI rules](#). AusCycling reserves the right to conduct random bike checks before or after a race. Riders that fail to pass the pre-race check may need to either race on a different, compliant bike or may be given a time penalty.
17. Riders abandoning the race must report this to a race official and hand back their race numbers and transponder. Failure to report may result in a \$50 fine.

Mansfield Hotel Tour p/b Orcoda – Specific Event Information

1. The Mansfield Hotel Tour powered by Orcoda forms part of the 2024 AusCycling Victorian Road Series and will run according to the [2024 AusCycling VRS Regulations](#).
2. The Mansfield Hotel Tour p/b Orcoda is an individual race offering a team's competition in all A Grade VRS categories to registered UCI, NRS and VRS teams. The teams classification* will be calculated based on individual riders results as per [UCI Regulation 2.6.016](#).
3. As the Mansfield Hotel Tour p/b Orcoda is an individual tour and held on open roads, there will be no race convoy. **No support, team or follow vehicles** apart from Marked Official Convoy vehicles will be permitted for any race stages.
4. All riders are reminded to ensure you carry your own spare(s). There may be neutral support for A grade categories if enough volunteers can be found*. Riders in teams are permitted to swap equipment with team mates only.
5. *Please contact annina.gallagher@auscycling.org.au if you would like to assist with neutral spares.
6. The Broom Wagon will follow the last rider on the course. Should any rider have a mechanical failure that cannot be fixed, the Clean-Up Wagon will retrieve them and drop them back to the Race headquarters. Riders who are deemed to be too far behind the peloton will be pulled from the race by the clean-up wagon – this will be at the commissaires discretion.
7. In the event that there are extreme weather conditions, the AusCycling Extreme Weather policy will be enforced. More information about the policy can be found here: <https://www.auscycling.org.au/page/about/policies-rules>
8. There is a feed zone on stage 2 for grades doing two and three laps. Depending on the weather forecast the Chief Commissaire may at his discretion allow additional feeding. This will be communicated to riders on the day.
9. There will be a toilet near the start of all three stages.

General Classification

The overall winner of the race will be the rider who has the lowest accumulative time after subtracting bonuses and adding penalties for all stages, including the time trial.

All stage placings will be listed in the results communiqué with their place and time, which has been verified by the video camera. It is essential that all riders pin their numbers on properly so that they can be identified on the photo finish film.

Riders may be penalised for incorrect number placement.

In the case of a dead heat in general classification fractions of a second registered by the timekeeper during the time trial shall be added back into the total accumulated time to decide the result. If the result is still a dead heat the tie-breaking sequence will be: the placings of each stage shall be added, the rider with the lowest accumulated number being placed ahead of the other. As a final separator, the placings on the final stage shall be the decider.

Mountains Classification

Winners will be based on the rider with the greatest number of points accrued over Stages Two and Three. Points will be awarded as follows:

Stage 2:

At the corner of Peppermint Lane and Old Tolmie Road on every lap. Grades doing one lap at 14.5km. Grades doing two laps at 14.5km and 51.2km, Grades doing three laps at 14.5km, 51.2km and 87.9km.

- 1st – 3 Points
- 2nd – 2 Points
- 3rd – 1 Point

Stage 3:

48.7km (Finish, Cat. 2)

- 1st – 7 Points
- 2nd – 5 Points
- 3rd – 3 Points
- 4th – 1 Point

In the event of a tie in the KOM/QOM classification, the following criteria shall be applied in order until the riders are separated: 1. number of first places in the highest category climbs; 2. number of first places on climbs in the next inferior category and so on; 3. general individual classification by time.

Sprint Classification

Points will be awarded for intermediate sprints only as follows:

- 1st – 3 Points
- 2nd – 2 Points
- 3rd – 1 Point

Locations

Stage 2: 7.6km from the start only on the first lap for all grades.

Stage 3: 17.8km from the start

In the event of a tie in the Sprint classification by points, the following criteria shall be applied in order until the riders are separated: 1. number of stage wins; 2. number of wins in intermediate sprints counting for the general classification on points; 3. general individual classification by time.

Time Bonuses

Calculating the times for individual classification - The following time bonuses will be deducted from the general classification following stage 2 and 3:

Intermediate sprint:

1st – 3sec

2nd – 2sec

3rd – 1sec

Stage finishes:

1st – 10sec

2nd – 6sec

3rd – 4sec

Teams Classification (A Grade only)

Only registered 2024 VRS and NRS Teams are eligible for the Teams Classification. For further information on 2024 VRS Teams please refer to the [2024 VRS Regulations](#).

As per UCI Article 2.6.016, the team classification for the day shall be calculated on the basis of the sum of the three best individual times from each team except the team time trial that is governed by the specific regulation of the event. In the event of a tie, the teams shall be separated by the sum of the places acquired by their three best times on the stage. If the teams are still tied, they shall be separated by the placing of their best rider on the stage classification. The team general classification shall be calculated on the basis of the sum of the three best individual times from each team in each stage ridden. In the event of a draw, the following criteria shall be applied in order until the teams are separated: 1. number of first places in the daily team classifications; 2. number of second places in the daily team classifications; 3. etc. If there is still a draw, the teams shall be separated by the placing of

their best rider in the general individual classification. Any team reduced to fewer than three riders shall be eliminated from the general team classification

Any team reduced to fewer than three riders shall be eliminated from the general team classification.

Most Competitive

Orcoda will award Most Competitive rider jerseys to each A-grade after each of the road race stages, Stage 2 and Stage 3. These will be decided by the Commissaire.

Course Information

Stage 1: Individual Time Trial

Start Location: Stoneleigh Rd, Mansfield

Start Time: 8am

Distance: 10.0km

The Time Trial begins on a start ramp with each rider leaving 30 seconds apart. Each rider is allocated a start time if a rider does not show for their time the start time does not change for the next rider. If a rider arrives late or faces a mechanical issue shortly before the start, they are required to report to the Clerk of Course at the start ramp.

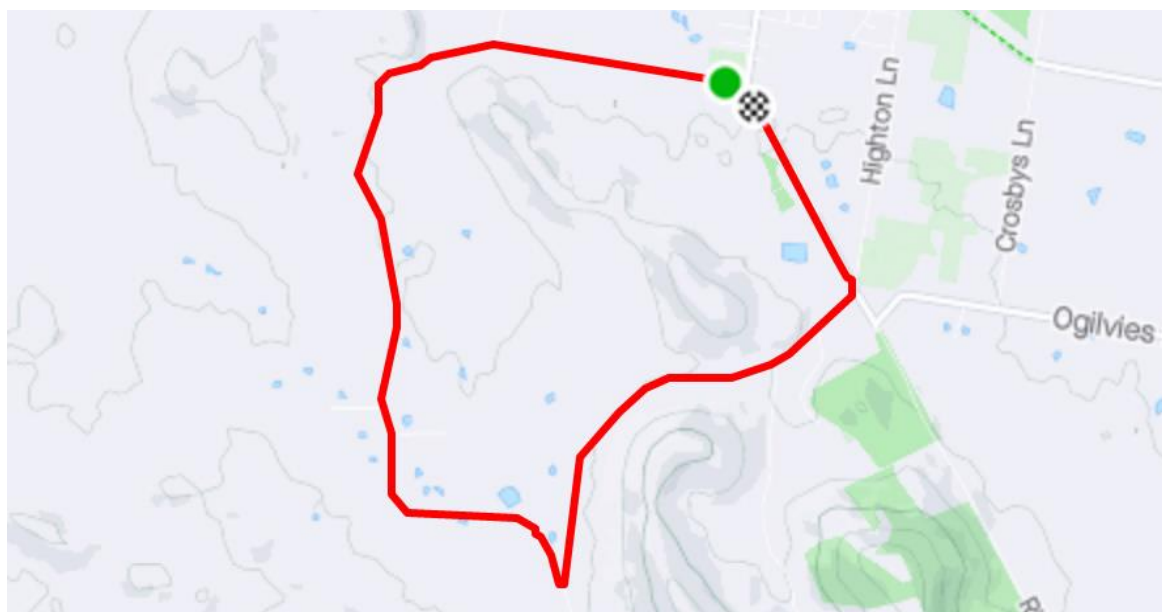
Start order:

Masters Men B - Elite Men C – Junior Men 19 - Masters Men C – Women A – Women B – Women C –
Elite Men A – Masters Men A – Elite Men B

A link to the individual start times will be posted on Entryboss by Friday, 15 March 2024.

Stage 1 Map

[Online course map and profile](#)





Stage 2 – Col Du Tolmielet Circuit

Start Location: 640 Mansfield Whitfield Road Mansfield (6km from town. Competitors, please ride out. Parking will be available for spectators. Please follow parking marshals instructions.)

Start Time

2pm. All riders in all grades must be in the start paddock by 1:40pm to sign on.

Distances

111km (3 laps): Men A.

74km (2 laps): Women A, Men B, Masters Men A, Masters Men B, J19 Men.

37km (1 lap): Women B, Women C, Men C, Masters Men C

Sprint

At 7.6km, on lap one only, for all grades.

KOM / QOM

Points allocated at 14.5km, 51.2km and 87.9km at the intersection of Peppermint Lane and Old Tolmie Road.

Feed Zone and Litter Zone

A feed zone is available at the top of the Old Tolmie Road climb followed by a litter zone. Riders in grades doing one lap cannot feed. Riders in grades doing two laps may only feed on lap two. Riders in grades doing three laps may only feed on laps two and three.

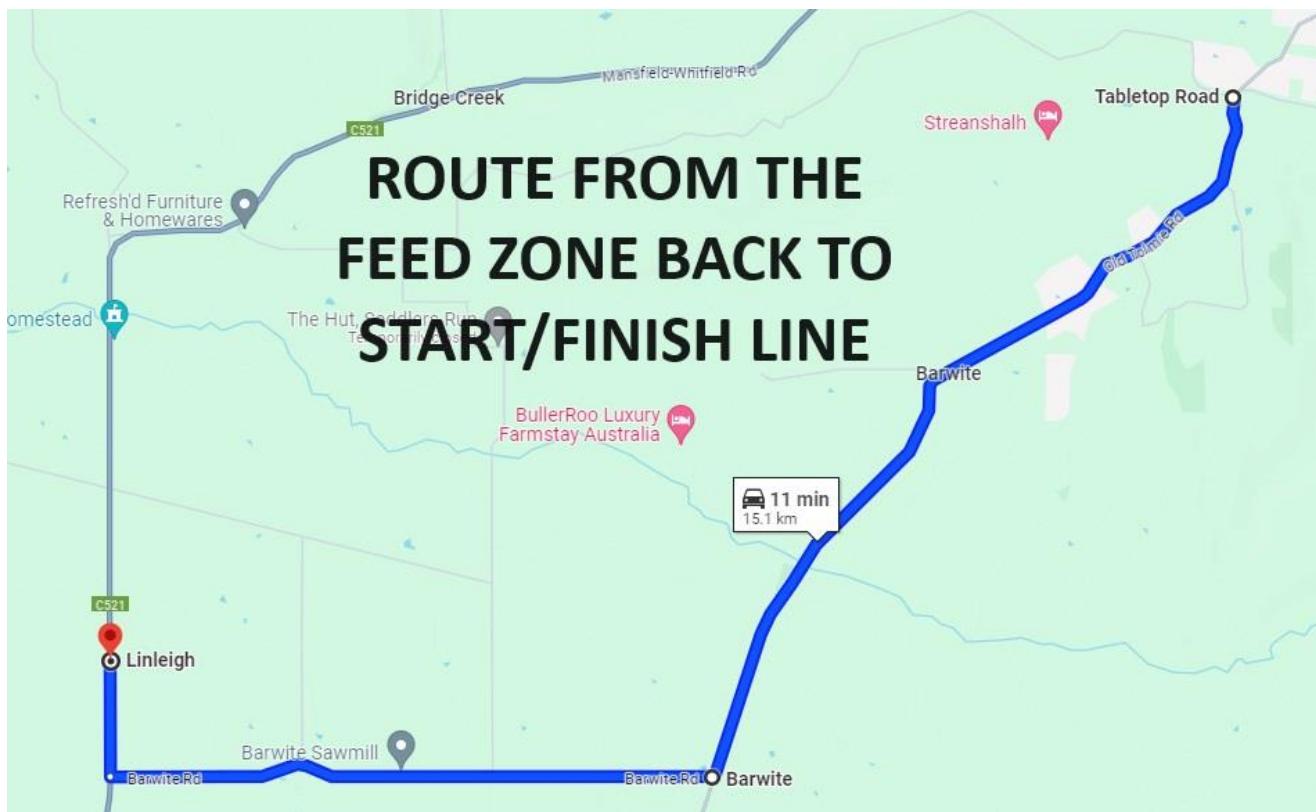
Vehicles travelling to the feed zone during the race **must** go north on the Whitfield Road and turn right into Tabletop Road. Please see the map below. Tabletop Road is an unsealed gravel road suitable for two-wheel drive vehicles. Limited parking is available on private property at the corner of Tabletop Road and Old Tolmie Road. Please follow the parking marshal's instructions.

Vehicles returning from the feed zone **must** go south down Old Tolmie Road and turn right into Barwite Road. Please see the map below.

Under no circumstances can nonofficial vehicles travel on the circuit in the direction of the race. Riders associated with vehicles that break this rule will be disqualified.



MMBCC are very fortunate to have strong community support for the Mansfield Tour. Three private landowners have given us access to their properties for event parking. Please respect their property. Leave it as you found it. Take all rubbish home with you.



Start Order*

Men A:	2.00pm
Masters Men A:	2.03pm
Men B:	2.06pm
Junior Men 19:	2.09pm
Masters Men B:	2.12pm
Men C:	2.15pm
Masters Men C:	2.18pm
Women A:	2.21pm
Women B:	2.24pm
Women C:	2.27pm

*Grades may be combined (separate results) at the discretion of the event organiser and AusCycling.

Stage 2 Map

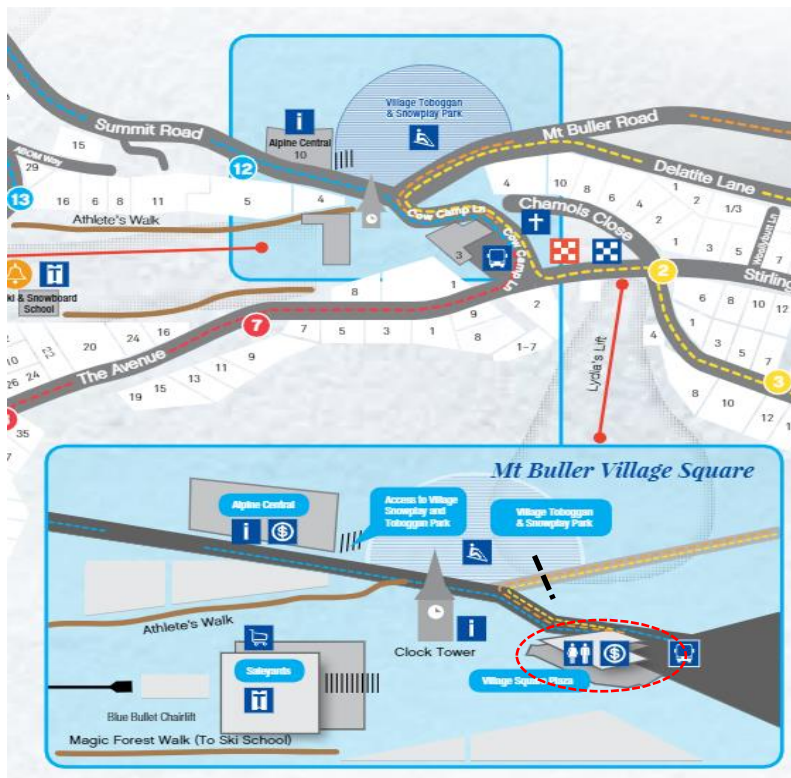
[Online course map and profile](#)

Women A:	8.00am
Women B:	8.05am
Women C:	8:10am
Masters Men C:	8.20am
Masters Men B:	8.30am
Elite Men C:	8.30am
Masters Men A:	9.05am
Elite Men B:	9.10am
Junior Men 19:	9.10am
Elite Men A:	9.30am

*Grades may be combined (separate results) at the discretion of the event organiser and AusCycling.

Please Note:

All lead vehicles will be available to place bags containing warm clothing and personal items at the commencement of each grade.

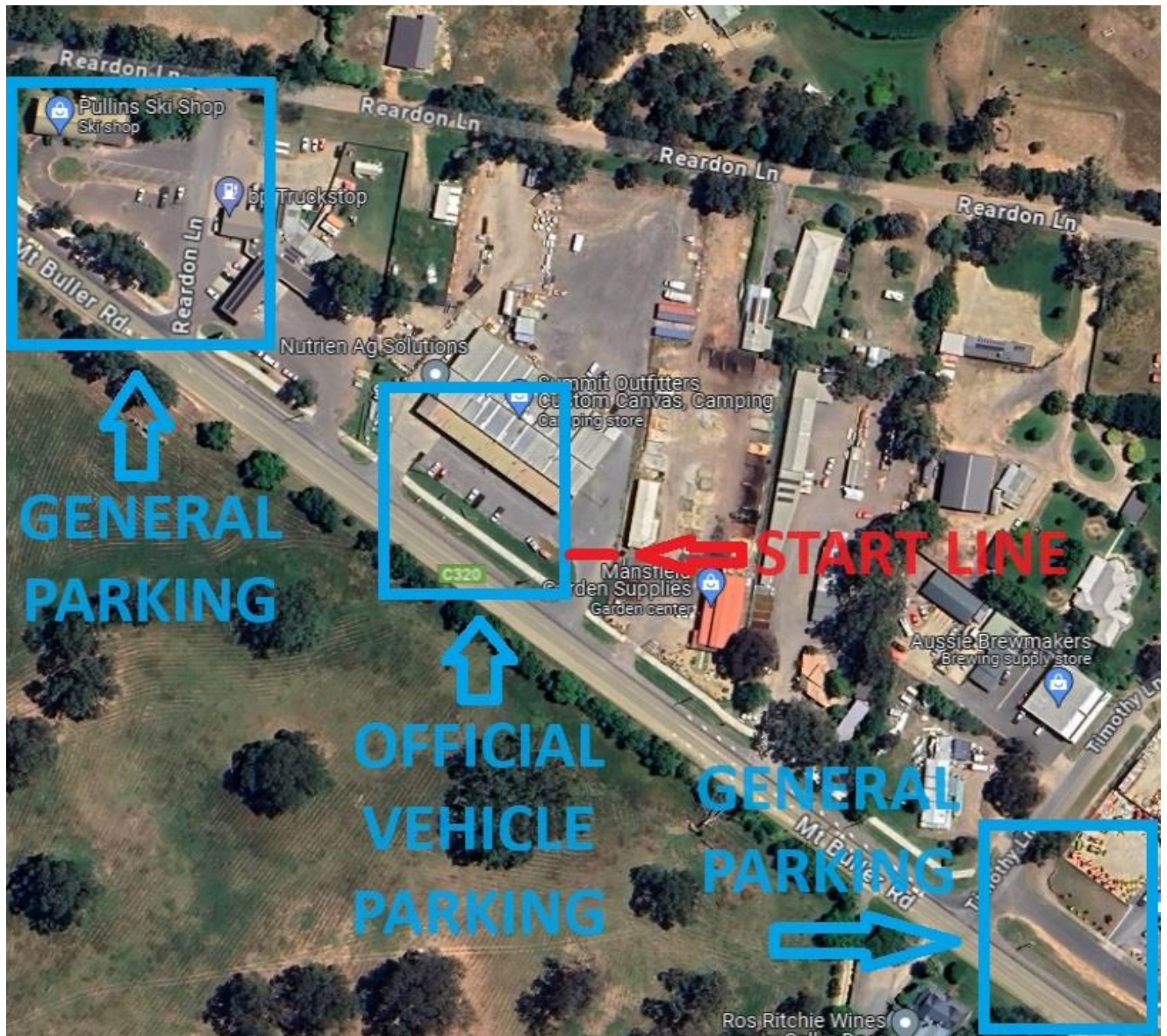


In the event of cold weather please make use of the Mt Buller Village Square buildings for shelter, until the road is declared clear by the Race organisation, for your safe descent.

Mount Buller is an alpine environment, and the weather conditions can change rapidly. The temperature at the Village is about ten degrees lower than Mansfield. Please be prepared.

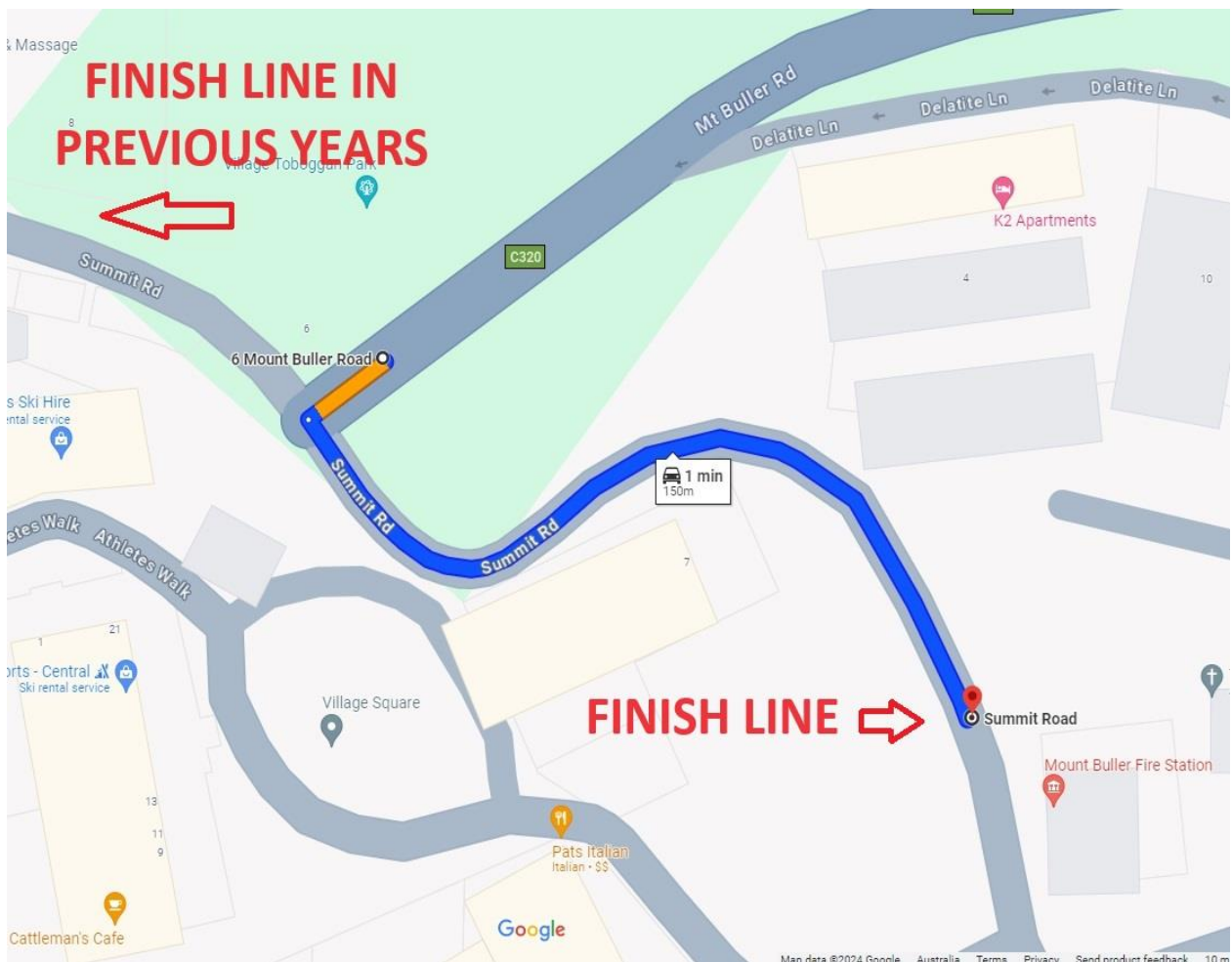
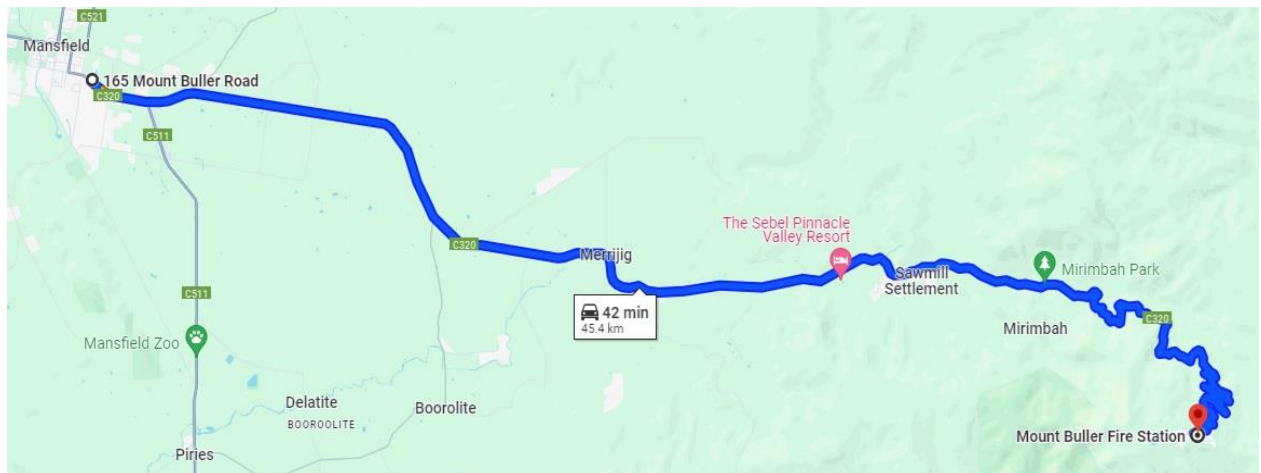
No riders are to leave the Village and begin descending prior to 11:30am.

Stage 3 Start Area Parking



Stage 3 Map

Mount Buller Stage 3



Course Mockas

Course Mocka: Stage 1 - ITT

No	Km	Roads	Details	Comments
1	0	Stoneleigh Rd	Start	
2	1.3	Owens Creek Road	Veer left onto Owens Creek Road at Kidston Parade	
3	1.6	"	Range View Court on R	
4	3.3	Merinda Way	Veer left onto Merinda Way	
5	4.4	"	Lily Court on R	
6	4.6	"	High Vista Court on L	
7	6.0	Monkey Gully Road	Turn left onto Monkey Gully Road	
8	8.1	"	Quarry Lane on R	
9	8.8	"	Turn left onto continuation of Monkey Gully Road at Highton Lane	CAUTION! Rough surface.
10	10.0	"	FINISH	

Course Mocka: Stage 2 – Col du Tolmielet Circuit

No	Km	Roads	Details	Comments
1	0	Mansfield Whitfield Rd	640 Mansfield-Whitfield Rd	Start area – Linleigh Farm Paddock
2	1.1	"	Left turn at Barwite Rd	
3	2.9	"	Saligari Ln on L	
4	4.7	"	Byrne Ln on L	
5	6.2	"	Comerfords Rd on L	
6	6.7	"	Left turn at Old Tolmie Rd	
7	7.6	"	SPRINT 1	SPRINT 1
8	8.8	"	Broken River	Start of climb
9	11.1	"	Melba Rd on L	
10	13.3	"	Grandview Dr on R	
11	14.3	"	Bromfield Dr on R	
12	14.5	"	Peppermint Ln on L	KOM/QOM
13	14.9	"	Feed Zone Start	Laps 2 and 3 only
14	15.1	"	Tabletop Rd on L	Feed Zone End / Litter Zone Start
15	15.2	"	Bunstons Rd on R	Litter Zone End
16	16.1	"		CAUTION! Off-camber bend
17	16.4	"	Lavender Farm Rd on R	

18	16.7	"	Candlebark Ln on L	
19	17.3	"	Wombat Ln on L	
20	18.0	"	Tolmie Mahaikah Rd on R	
21	18.8	"	Left turn at Mansfield-Whitifeld Rd	
22	19.4	"	Spring Creek Rd on R / Wattle Crt on L	
23	19.5	"	Chip Rd on L	
24	20.0	"	Keystone Rd on R	
25	29.4	"	Sawpit Gully Rd on R	
26	31.7	"	Tabletop Rd on L	
27	31.8	"	Bridge Creek	
28	32.8	"	Lesters Rd on R	
29	33.1	"	Blue Range Rd on R	
30	33.6	"	Broken River	
31	35.2	"	Long Ln on L & R	
32	36.8	"	Finish	End of lap

Course Mocka: Stage 3 - Mt Buller Climb

No	Km	Roads	Details	Comments
1	0	Mt Buller Tourist Rd	Start area off Mt Buller Road, Mansfield	Start area – Hotel arch
2	0.6	"	Crosbys Lane on R	
3	1.7	"	Mansfield Woods Point Rd Intersection	End of Neutralised Section
4	2.7	"	Graves Rd on L	
5	3.6	"	Whites Creek	
6	5.2	"	Tin Hut Lane on R	
7	6.4	"	Scullys Lane on L/Stoneys Rd on R	
8	8.3	"	Glenroy Rd on L	
9	9.2	"	Ingaman Rd on L	
10	10.7	"	Pollards Rd on R	
11	11.5	"	Hearns Rd on R	
12	12.8	"	Buttercup Rd on L	
13	14.4	"	Chapel Hill Rd on R	
14	16.6	"	School Lane on L	
15	17.0	"	Delatite River	
16	17.1	"	Powers Rd on R	
17	17.2	"	SPRINT 2	SPRINT 2
18	17.5	"	Timbertop Creek	

19	18.8	"	Howqua Track on R	
20	20.7	"	Grammar School Rd on R	
21	24.0	"	Mimosa Dve on R	
22	25.7	"	Alpine Ridge Dr on R	
23	25.9	"	Changue Rd on R	
24	27.1	"	Warrambat Rd on R	
25	27.4	"	Carters Rd on L	
26	27.5	"	Dohertys Rd on R	
27	29.9	"	Mirimbah Store on R	
28	45.2	"	Left turn at Summit Rd	
34	45.4	"	KOM/FINISH	KOM



Vehicle Pooling Solution
for fleets who share vehicles
between staff

